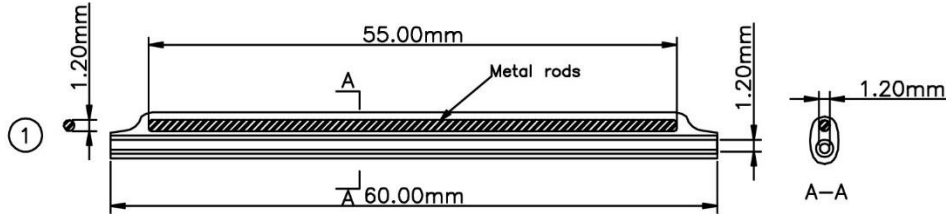


**RoHS Compliant**

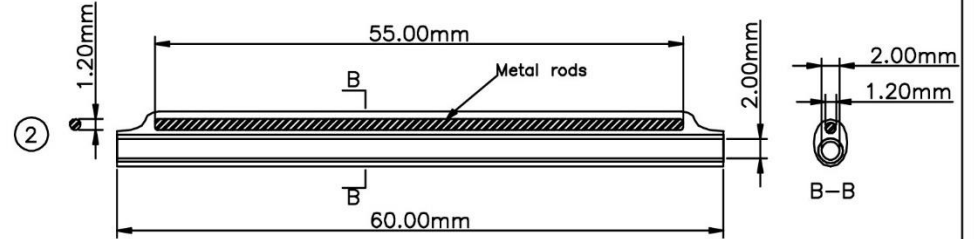
This Drawing Contains Confidential Proprietary Design information. Rights Are Expressly Reserved. It is submitted under a trust relationship for a specified Purpose. It is agreed that it will not be used for any other purpose nor its contents revealed to anyone, Except for this purpose, Nor copied in whole or part, nor its design features used in other projects, It will be returned when no longer required for the specified purpose or upon request.

| REV | DATE       | DESCRIPTION | ECN NO. | NAME |
|-----|------------|-------------|---------|------|
| A   | 2019.12.02 | NEW RELEASE |         |      |
| B   | 2020.06.04 | UPDATE      |         |      |

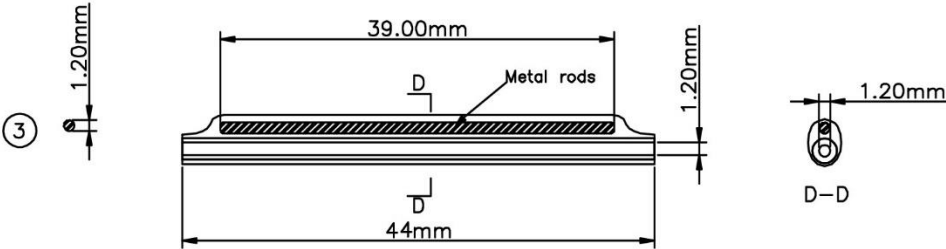
**One Fiber Series: ① ~ ④**



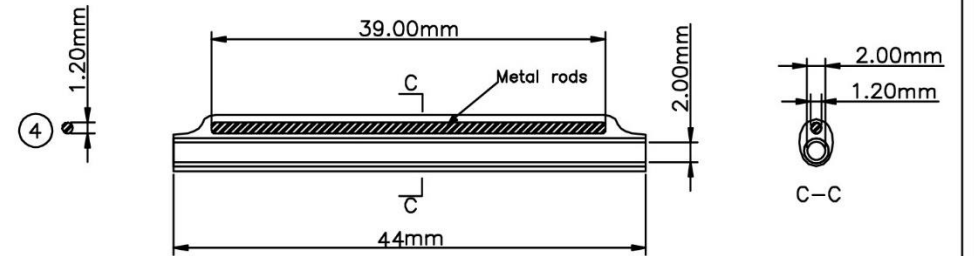
Parameter:  
L:60.00mm, I.D:1.2mm, Metal Rod:O.D:1.2mm  
PART NO.:G9985JD201-044



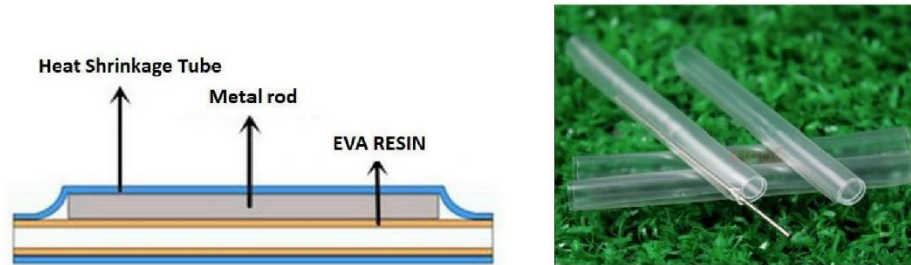
Parameter:  
L:60.00mm, I.D:2.00mm, Metal Rod:O.D:1.20mm  
PART NO.:G9985JD201-129




Parameter:  
L:44.00mm, I.D:1.20mm, Metal Rod:O.D:1.20mm  
PART NO.:G9985JD201-141



Parameter:  
L:44.00mm, I.D:2.00mm, Metal Rod:O.D:1.20mm  
PART NO.:G9985JD201-074



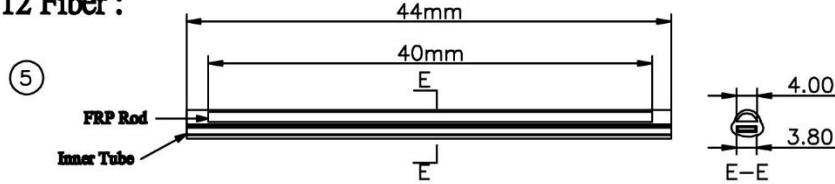
|   |        |   |        |  |
|---|--------|---|--------|--|
|  |        | PART NO.:                                   |        | JF-FS-40MM-1.2MM<br>JF-FS-40MM-2MM<br>JF-FS-60MM-1.2MM<br>JF-FS-60MM-2MM<br>JF-FS-12F-40MM |
|   |        | TITLE: Splice Protection Tube Sleeve Series |        |  |
| DRAWN BY  | KABAD  | DRAWING NO.                                 |        |  |
| CHECKED BY  | TRUDEL | DRAWING SIZE                                | A4     |  |
| APPROVED BY   | TRUDEL | UNIT  | mm     |  |
| SORTING NO.   | JFTECH | PAGE  | 1 OF 3 |  |

**RoHS Compliant**

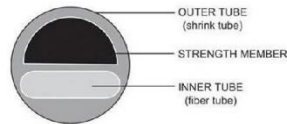
This Drawing Contains Confidential Proprietary Design information. Rights Are Expressly Reserved. It is submitted under a trust relationship for a specified Purpose. It is agreed that it will not be used for any other purpose nor its contents revealed to anyone, Except for this purpose, Nor copied in whole or part, nor its design features used in other projects, it will be returned when no longer required for the specified purpose or upon request.

| REV | DATE       | DESCRIPTION | ECN NO. | NAME |
|-----|------------|-------------|---------|------|
| A   | 2019.12.02 | NEW RELEASE |         |      |
| B   | 2020.06.04 | UPDATE      |         |      |

**12 Fiber :**



Parameter:  
 L:44.00mm, I.D:3.8\*1.9mm L:44mm,  
 FRP Rod:O.D:4.0\*2.0mm L:40mm  
 PART NO.:G9985JD201-143



1. Carton Size: 44\*30\*18cm(GCTN-217A)
2. Quantity/carton: <=20000PCS
3. Carton Paper structure:K:K
4. Carton Strength:19.5±0.5Kg/cm<sup>2</sup>



Single Fiber Protection Sleeve

|             |        |   |        |  |
|-------------|--------|---|--------|--|
|             |        | PART NO.:                                   |        | JF-FS-40MM-1.2MM<br>JF-FS-40MM-2MM<br>JF-FS-60MM-1.2MM<br>JF-FS-60MM-2MM<br>JF-FS-12F-40MM |
|             |        | TITLE: Splice Protection Tube Sleeve Series |        |  |
| DRAWN BY    | KABAD  | DRAWING NO.                                 |        |  |
| CHECKED BY  | TRUDEL | DRAWING SIZE                                | A4     |  |
| APPROVED BY | TRUDEL | UNIT  | mm     |  |
| SORTING NO. | JFTECH | PAGE  | 2 OF 3 |  |

**RoHS Compliant**

This Drawing Contains Confidential Proprietary Design information. Rights Are Expressly Reserved. It is submitted under a trust relationship for a specified Purpose. It is agreed that it will not be used for any other purpose nor its contents revealed to anyone, Except for this purpose, Nor copied in whole or part, nor its design features used in other projects, It will be returned when no longer required for the specified purpose or upon request.

| REV | DATE       | DESCRIPTION | ECN NO. | NAME |
|-----|------------|-------------|---------|------|
| A   | 2019.12.02 | NEW RELEASE |         |      |
| B   | 2020.06.04 | UPDATE      |         |      |

CTQ

| NO. | Critical Point                    | Standard                             | Comments |
|-----|-----------------------------------|--------------------------------------|----------|
| 1   | Inner diameter (I.D/mm)           | 1.Type 1 :1.20MM<br>2.Type 2 :2.00MM |          |
| 2   | Ribbon Sleeve Inner Tube (I.D/mm) | 3.8*1.9(mm)                          |          |
| 3   |                                   |                                      |          |



PART NO.: JF-FS-40MM-1.2MM  
JF-FS-40MM-2MM  
JF-FS-60MM-1.2MM  
JF-FS-60MM-2MM  
JF-FS-12F-40MM

TITLE: Splice Protection Tube Sleeve Series

|             |        |              |        |
|-------------|--------|--------------|--------|
| DRAWN BY    | KABAD  | DRAWING NO.  |        |
| CHECKED BY  | TRUDEL | DRAWING SIZE | A4     |
| APPROVED BY | TRUDEL | UNIT         | mm     |
| SORTING NO. | JFTECH | PAGE         | 3 OF 3 |